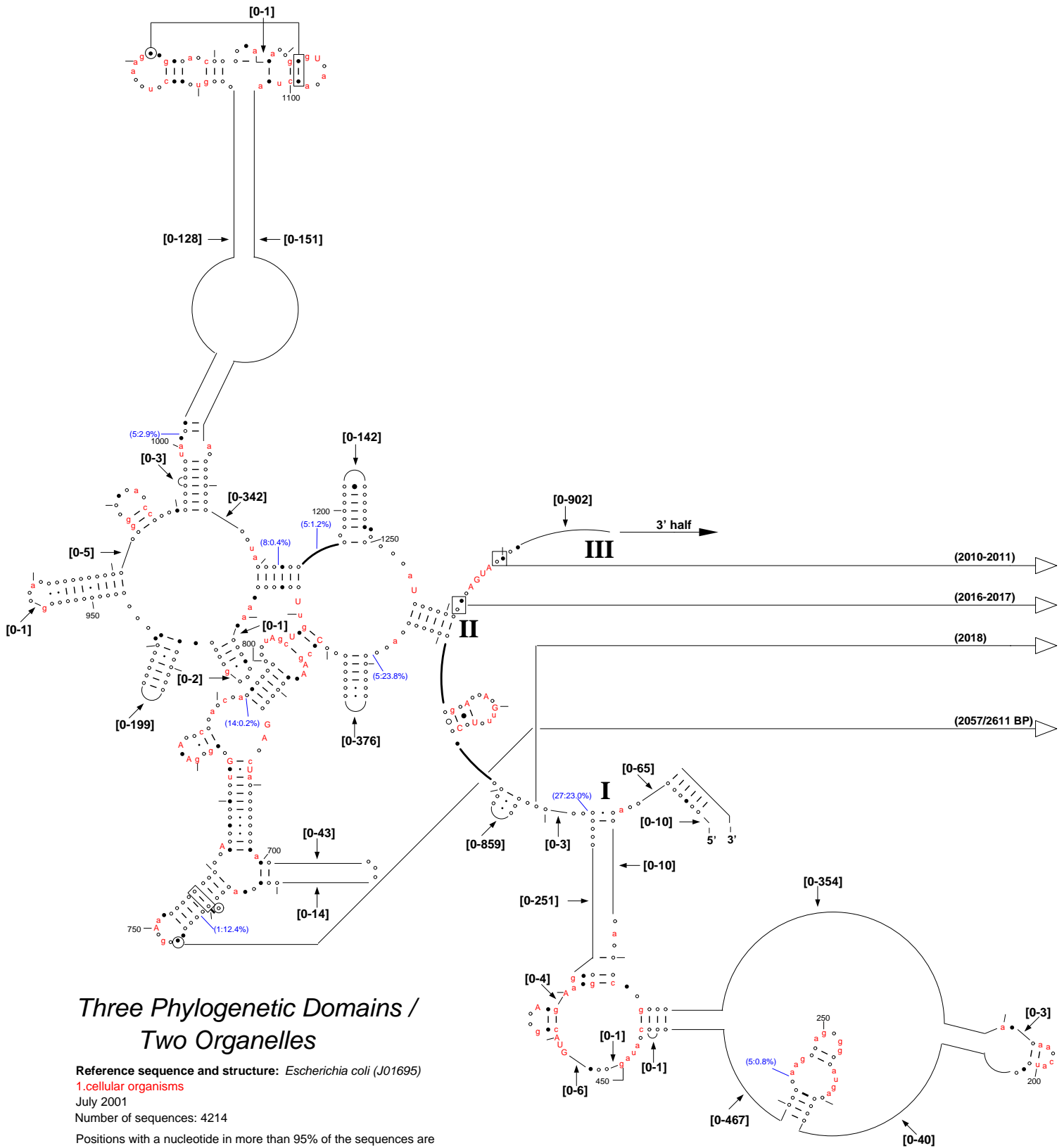


Phylogenetic conservation superimposed onto the *Escherichia coli* Large Subunit rRNA secondary structure - 5' half



Three Phylogenetic Domains / Two Organelles

Reference sequence and structure: *Escherichia coli* (J01695)

1. cellular organisms

July 2001

Number of sequences: 4214

Positions with a nucleotide in more than 95% of the sequences are shown in one of four categories:

- ACGU - 98+% conserved
- acgu - 90-98% conserved
 - - 80-90% conserved
 - - less than 80% conserved

Otherwise, the regions are represented by arcs.
Arc labels indicate the upper and lower number of nucleotides known to exist within the associated variable region.

Blue tags indicate insertions relative to the reference sequence.

Insertions that appear are:

(1) length 1-4 in more than 10% of sequences

(2) length 5 or greater in at least one sequence

with format:

(Max. Length of Insertion:Percentage of seqs with any length insertion)